

- 72 Commissions in Production
- 41 Planning Phase
- 11 Close Out Phase
- 3 Temporary Commissions in Planning

APP

October 6 PAC Minutes
Virgin Voyages

Miami-Dade County
Art in Public Places
Department of Cultural Affairs



Miami-Dade County
Department of Cultural Affairs
Art in Public Places

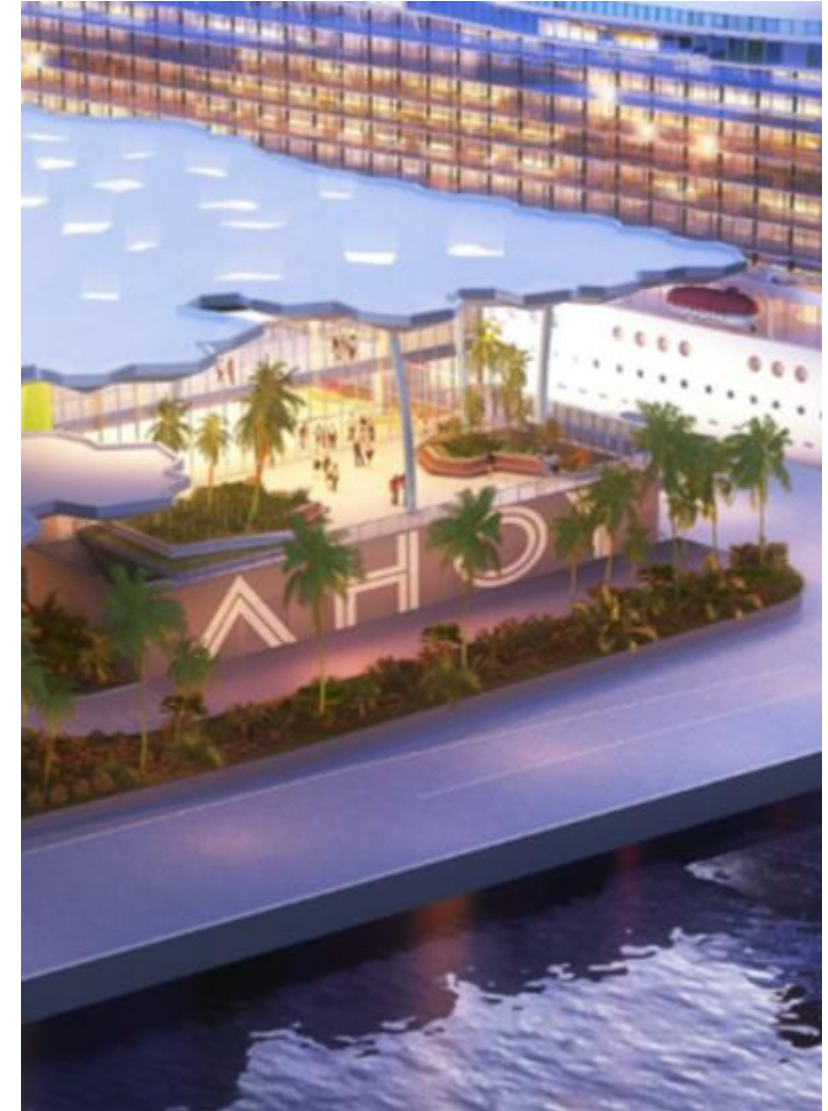
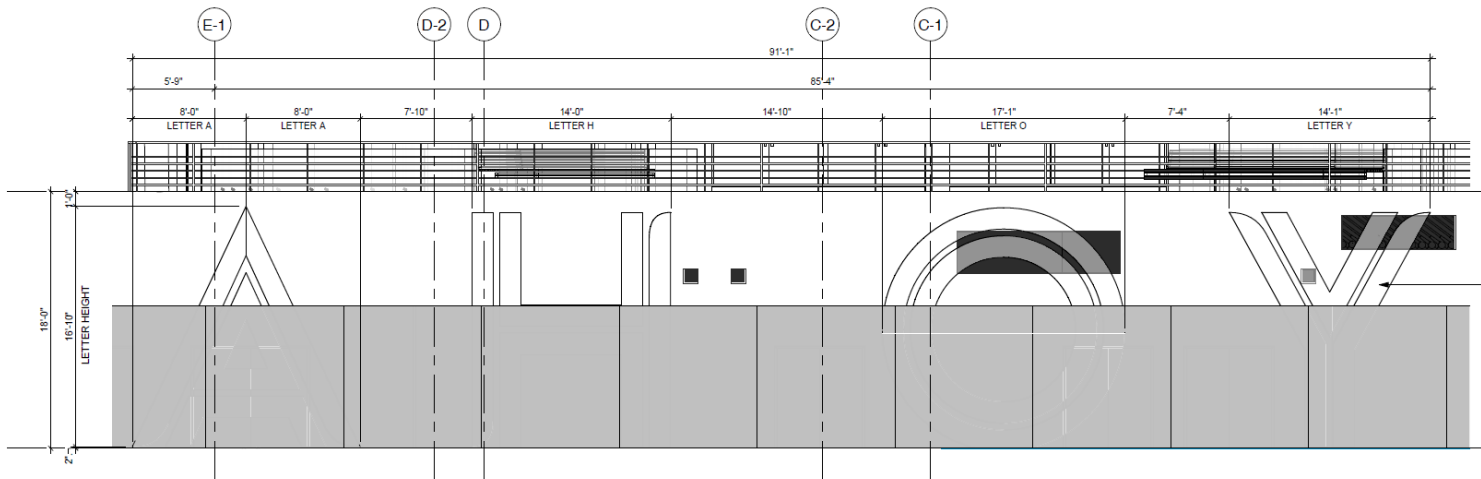
Virgin Voyages
Terminal V - Port Miami



South Florida Call to Artists

Text-Based Exterior Wall Application

- Text-based artwork application to exterior wall facing north, 18 feet tall and approximately 92 feet wide.
- Visible from MacArthur Causeway and Watson Island
- Applications are encouraged to be permanent, withstanding harsh weather conditions and not limited to paint applications.
- Client seeks text-based work aligned with themes of Virgin Voyages, tropical vernaculars, adventure, and sailing



Suspended Light-based Feature

- Suspended lighting feature intended to be installed within the Terminal's VIP lounge and bar
- Electricity infrastructure is existing



Integrated Sculptural Walls

- Sculptural wall relief and / or cladding for interior walls
- Create statement entrance and flow / wayfinding experience from entrance from VIP lobby into the VIP lounge and components (bar, restroom, amenities)



Planter Sculptures/ Seating Elements

- Stand-alone sculptural planting and seating elements
- Intention to be placed throughout interiors and exterior decks of Terminal



PATRICK OLESON



DEON RUBI



JESSY NITE



NAOMI FISHER

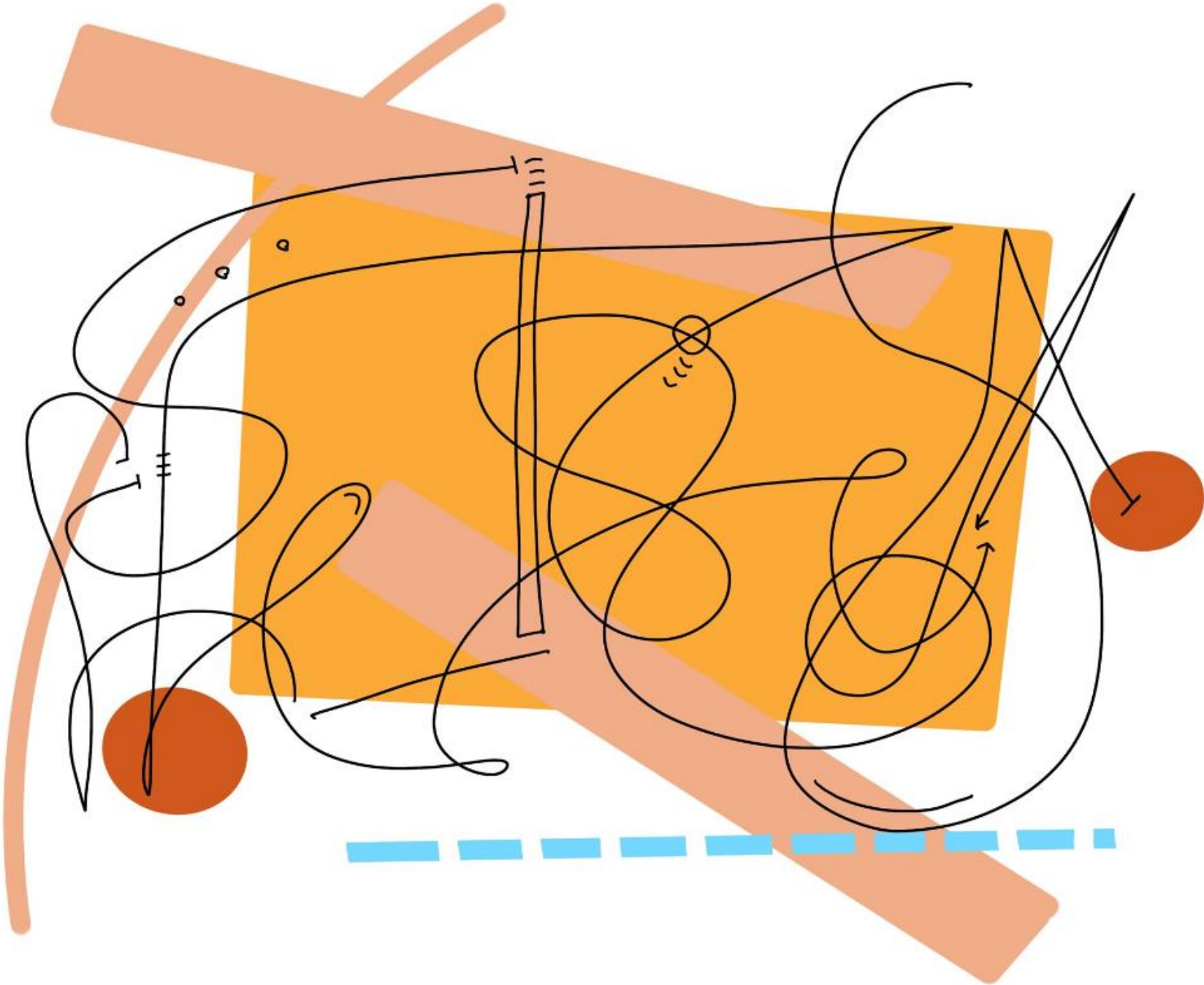




JILLIAN MAYER



NAJJA MOON



STERLING ROOK



JAMILAH SABUR



TOM SCICLUNA

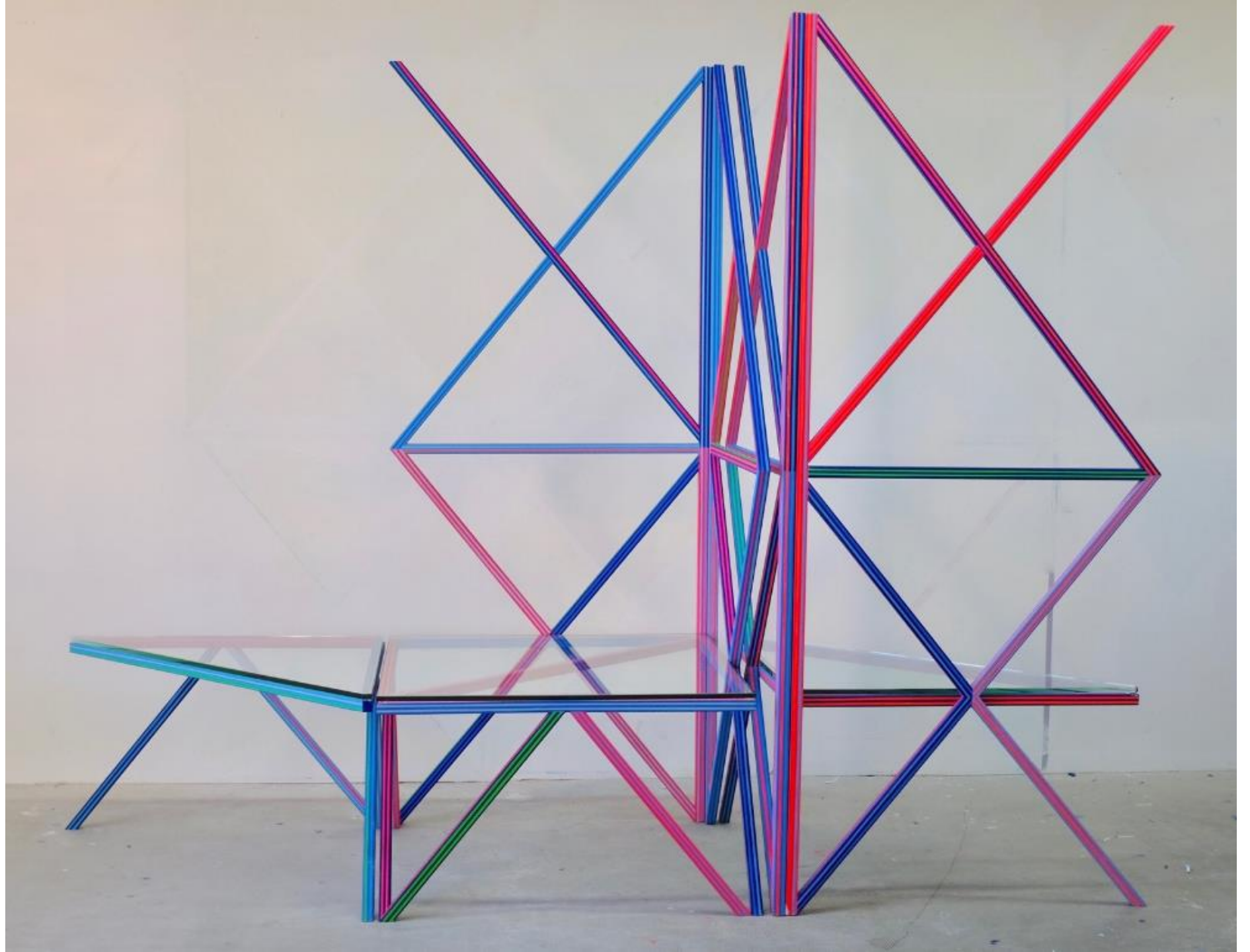




WE ARE NICE N EASY



KELLEY JOHNSON



Miami-Dade County
Department of Cultural Affairs
Art in Public Places

Virgin Voyages
Terminal V - Port Miami



National Call to Artists Time-Based Media

Time-based Media Video Wall

Upon entering the terminal, guests will experience a triple-height welcome area which will prominently feature a configuration of LED screens.

Shortlisted artists will be invited to create proposals for this large-scale time-based media wall with two options:

1. Artists are invited to propose content / time based media artwork designed for the configuration of screens and technology recommended by the client (32 LED screens, 1 x 36' vertical panels as seen in image on right)
2. Artists are invited to propose an original design and configuration of LED screens AND the content / time-based media artwork.

It is intended that the screen system and artwork compliment the architecture and highlight themes related to Virgin Voyages, nature, palm groves, water, and tropical vernaculars. Only the commissioned artwork will be displayed on the screens.





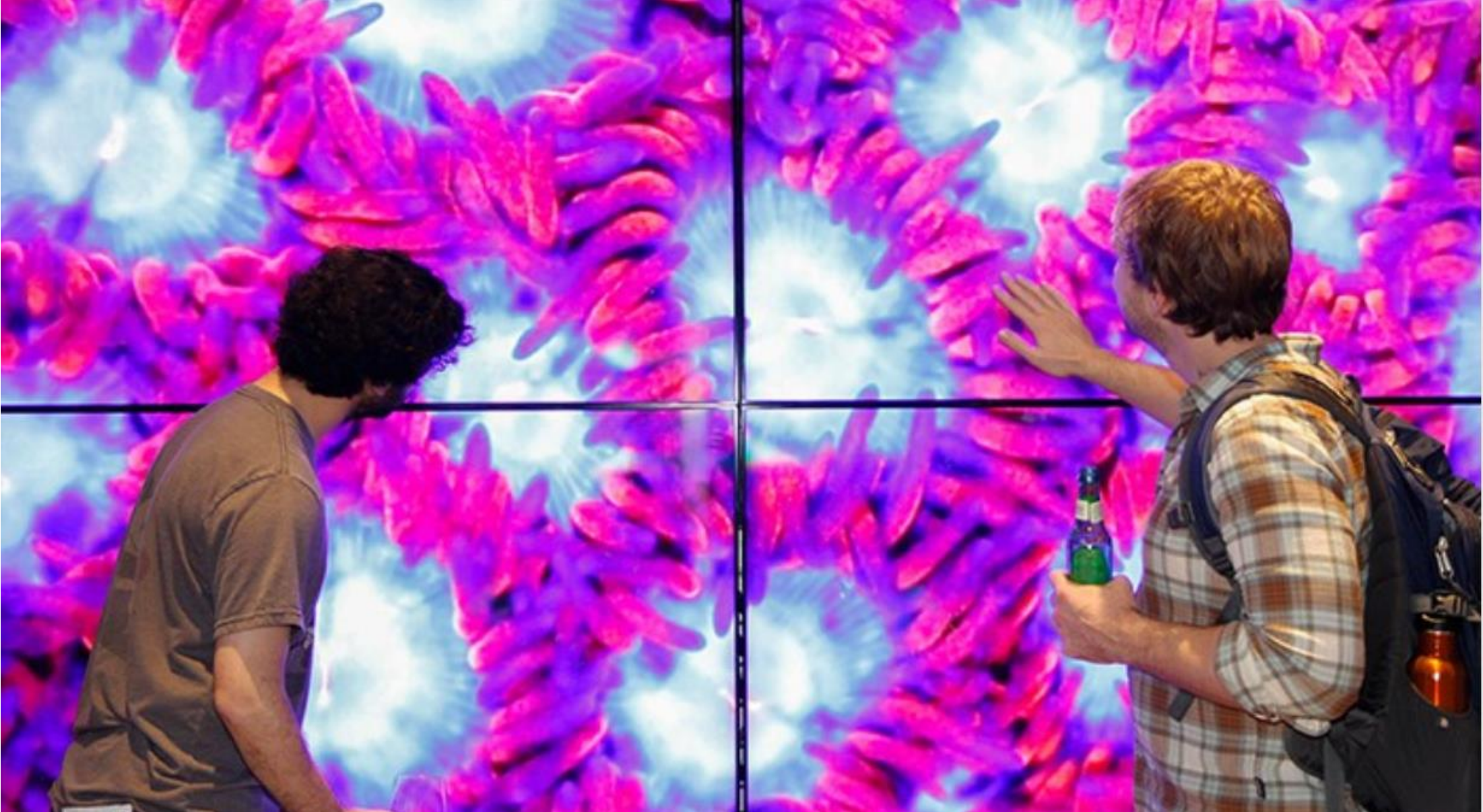
YUCEF MERHI
MIAMI BEACH



MONICA LOPEZ DE VICTORIA
MIAMI



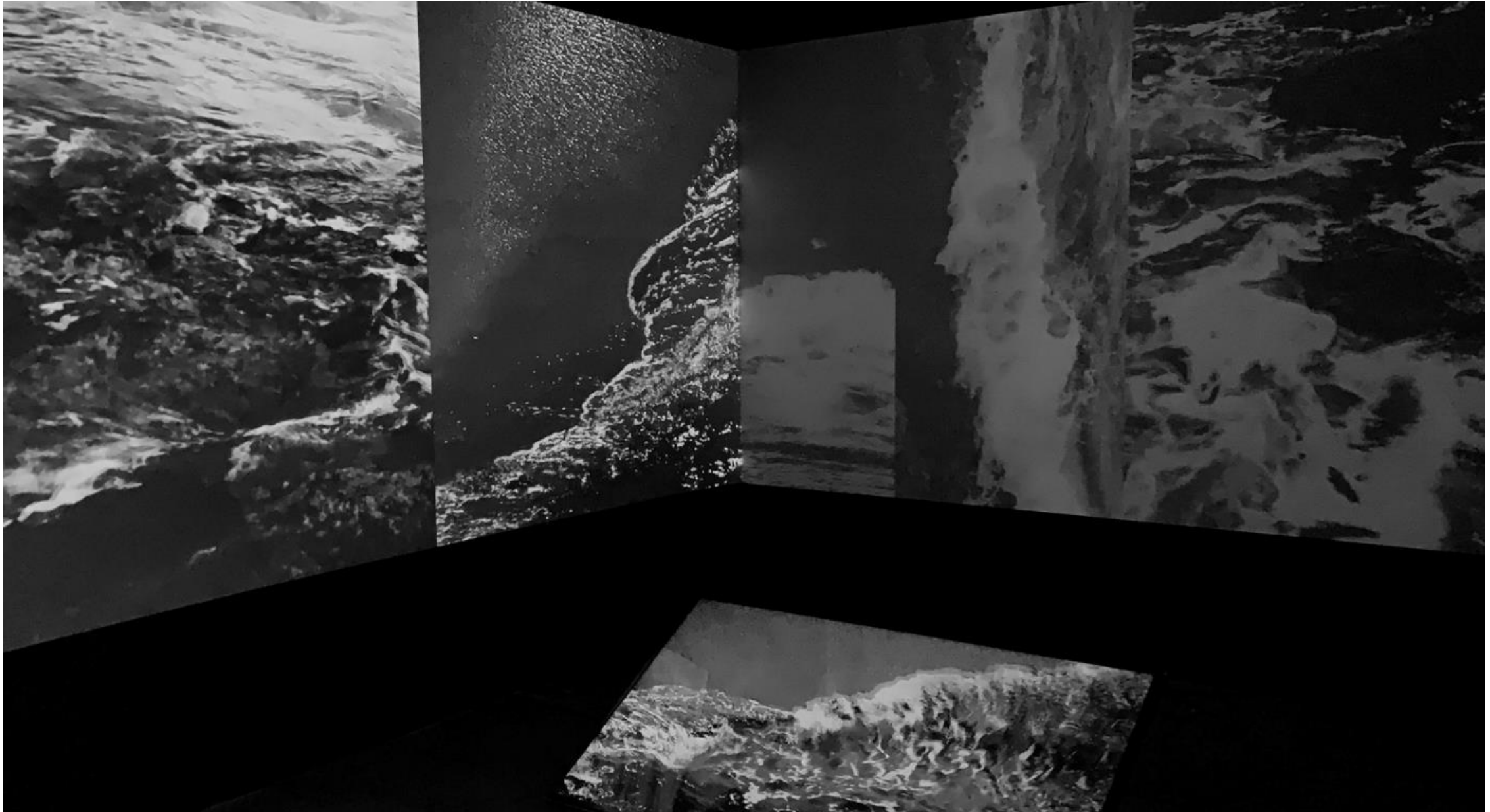
CORAL MORPHOLOGIC
MIAMI



DARA FRIEDMAN
MIAMI



DEBORAH JACK
JERSEY CITY



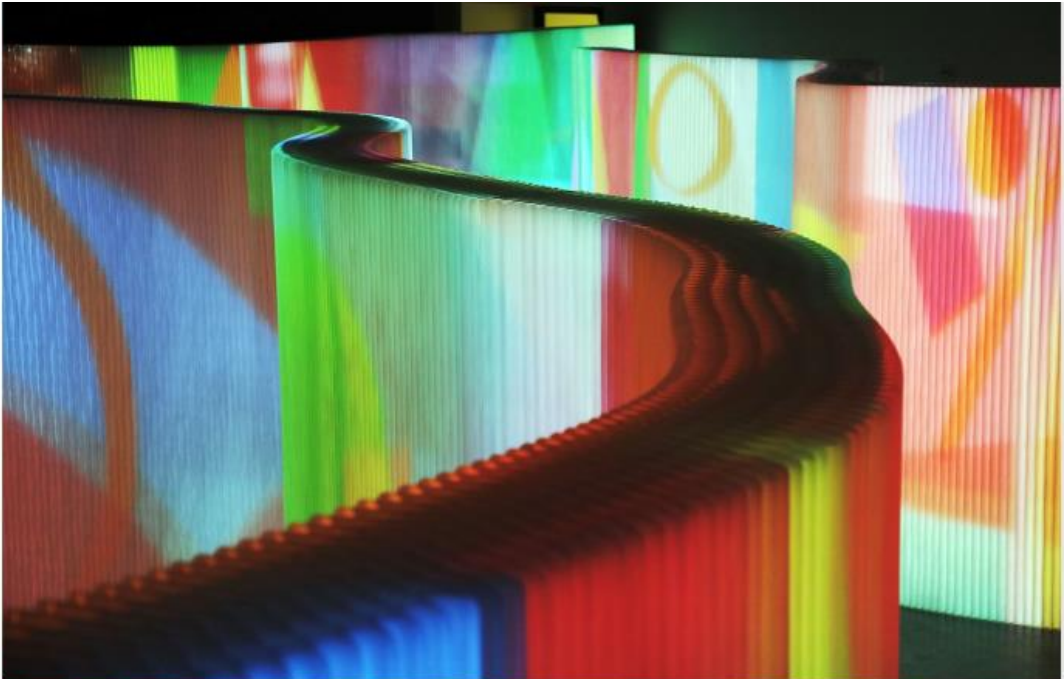
CAULEEN SMITH
LOS ANGELES



SOFTLAB
NEW YORK



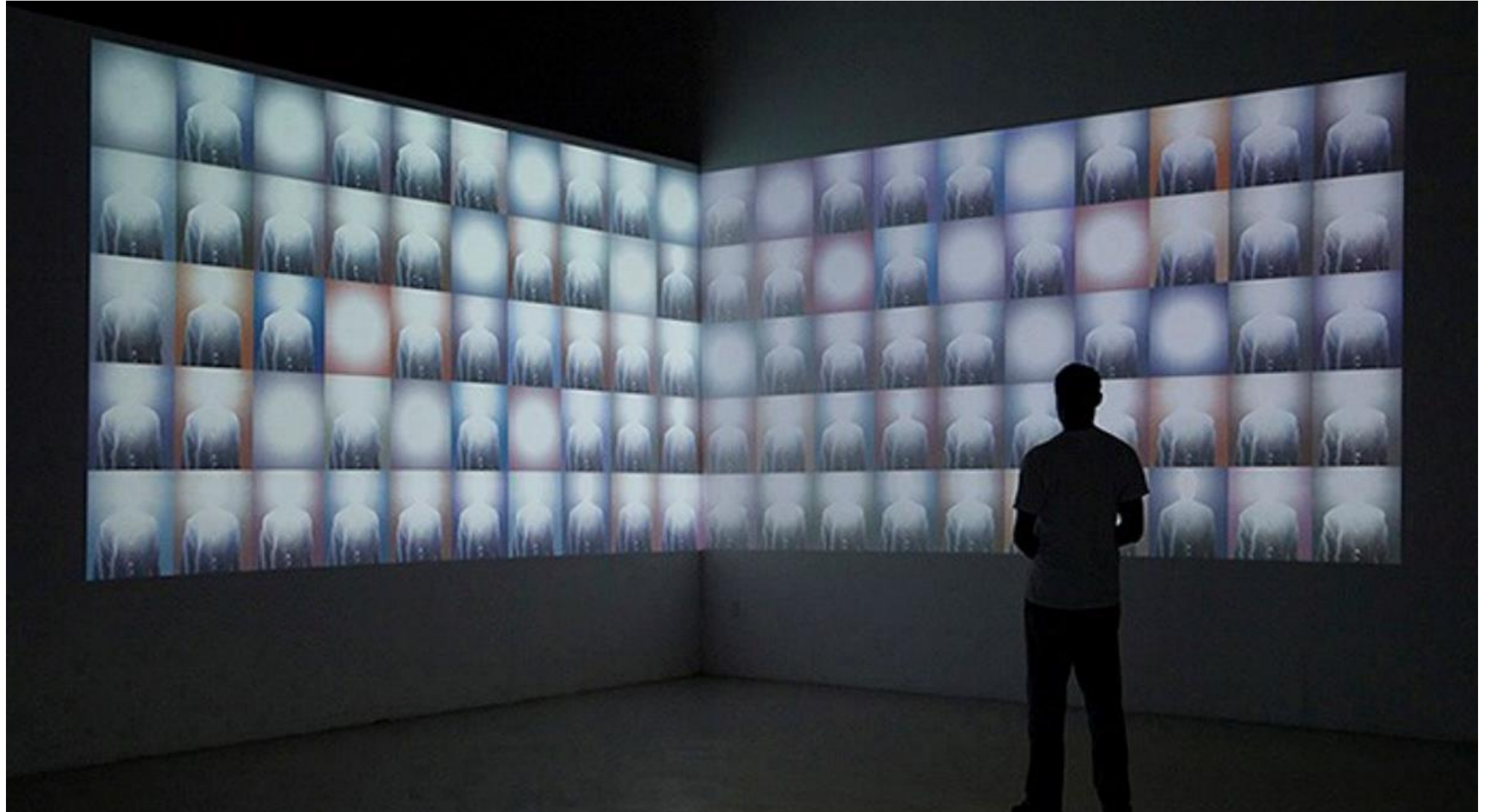
MONIKA BRAVO
NEW YORK



SIEBREN VERSTEEG
NEW YORK



ELIZABETH WITHSTANDLEY
LOS ANGELES



New Calls to Artists

Miami-Dade County
Art in Public Places
Department of Cultural Affairs

CALL TO ARTISTS



Rendering courtesy of Cohen Freedman Encinosa & Associates.

Gallery on the River

CALL TO ARTISTS



Rendering Courtesy of Kobi Karp

Platform 3750